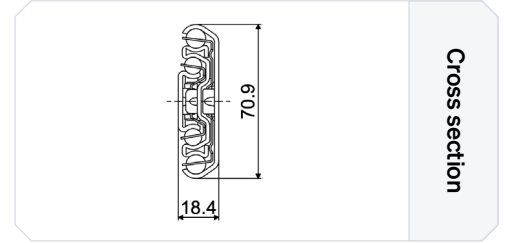
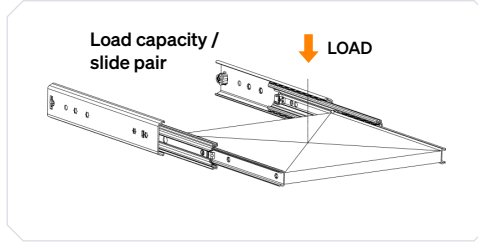


Telescopic slides  
for a world in motion.

## TR-7118 TITAN D

- Over extension slide - Loads up to 212 kg
- Slide profiles: Steel, zinQroteQ
- Ball cage: Steel, galvanized
- Sequence device: Plastic / Elastomer
- Bearings: Hardened carbon steel
- Rubber stop: Plastic / Elastomer
- Operating temperature: -20 to 80 degrees Celsius




### Specifications

| Fixation [Cabinet side]                                  | Fixation [Drawer side]  | Load capacity [kg] | Height [mm] | Width [mm] |
|--|---|--------------------|-------------|------------|
| <b>Metal</b><br>M5 / DIN 965 / ISO 7046<br>M5 / DIN 7500 | <b>Metal</b><br>M4 / DIN 965 / ISO 7046<br>M4 / DIN 7500<br>M4 / DIN 7991 / ISO 10462 | 157 - 212          | 70.9        | 18.4       |
| <b>Wood</b><br>5.0 / DIN 7997                            | <b>Wood</b><br>4.0 / 4.5 / DIN 7997   |                    |             |            |

### Technical information


| Article no. | Length [mm] | Travel [mm] | Load capacity [kg] |
|-------------|-------------|-------------|--------------------|
| MO1AA2      | 400         | 435         | 157                |
| MO1AA3      | 450         | 485         | 160                |
| MO1AA4      | 500         | 545         | 169                |
| MO1AA5      | 550         | 595         | 187                |
| MO1AA6      | 600         | 650         | 189                |
| MO1AA7      | 700         | 750         | 187                |
| MO1AA8      | 800         | 850         | 212                |
| MO1AA9      | 900         | 950         | 192                |
| MO1AB0      | 1000        | 1050        | 179                |

### Features & Fixations




**Feature**  
**Bumper with hold closed**

A hold-closed bumper absorbs impact and secures the drawer



**Fixation**  
**Click bracket**

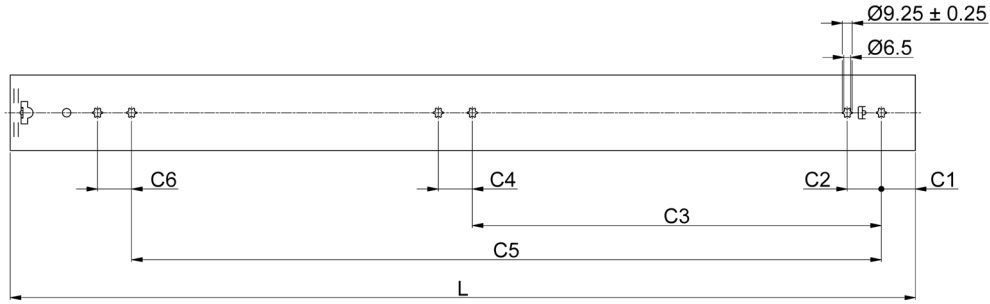
The click bracket enables quick, tool-free, secure mounting



**Fixation**  
**Countersunk holes**

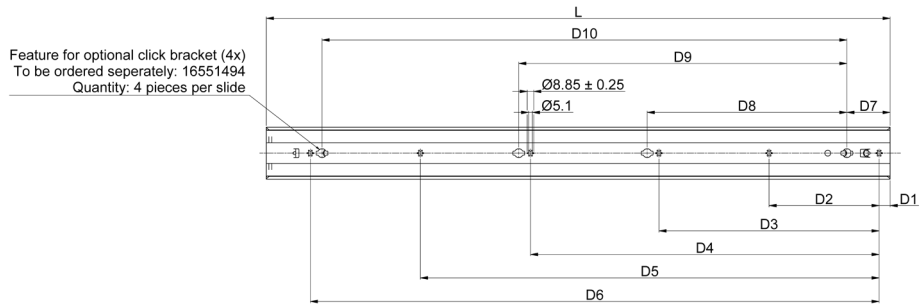
Countersunk holes ensure screws sit flush and avoid surface contact

Hole pattern [mm] [Cabinet Side]



| Article no. | L    | C1 | C2 | C3  | C4 | C5   | C6 |
|-------------|------|----|----|-----|----|------|----|
| MO1AA0      | 300  | 32 | 32 | 192 | 32 | /    | /  |
| MO1AA1      | 350  | 32 | 32 | 250 | 32 | /    | /  |
| MO1AA2      | 350  | 32 | 32 | 256 | 32 | /    | /  |
| MO1AA3      | 450  | 32 | 32 | 256 | 32 | /    | /  |
| MO1AA4      | 500  | 32 | 32 | 320 | 32 | /    | /  |
| MO1AA5      | 550  | 32 | 32 | 320 | 32 | /    | /  |
| MO1AA6      | 600  | 32 | 32 | 416 | 32 | /    | /  |
| MO1AB2      | 650  | 32 | 32 | 416 | 32 | /    | /  |
| MO1AA7      | 700  | 32 | 32 | 416 | 32 | /    | /  |
| MO1AB3      | 750  | 32 | 32 | 320 | 32 | 608  | 32 |
| MO1AA8      | 800  | 32 | 32 | 352 | 32 | 640  | 32 |
| MO1AB4      | 850  | 32 | 32 | 384 | 32 | 704  | 32 |
| MO1AA9      | 900  | 32 | 32 | 384 | 32 | 736  | 32 |
| MO1AB0      | 1000 | 32 | 32 | 448 | 32 | 832  | 32 |
| MO1AB5      | 1100 | 32 | 32 | 512 | 32 | 928  | 32 |
| MO1AB1      | 1200 | 32 | 32 | 544 | 32 | 1024 | 32 |

Hole pattern [mm] [Drawer Side]



| Article no. | L    | D1 | D2    | D3    | D4    | D5  | D6   | D7 | D8  | D9    | D10  |
|-------------|------|----|-------|-------|-------|-----|------|----|-----|-------|------|
| MO1AA0      | 300  | 25 | 125   | 250   | /     | /   | /    | 41 | 93  | 125   | 186  |
| MO1AA1      | 350  | 25 | 100   | 200   | 300   | /   | /    | 41 | 100 | 168   | 236  |
| MO1AA2      | 350  | 43 | 75    | 150   | 225   | 300 | /    | 59 | 118 | 150   | 268  |
| MO1AA3      | 450  | 43 | 87,5  | 175   | 262,5 | 350 | /    | 59 | 143 | 175   | 318  |
| MO1AA4      | 500  | 43 | 100   | 200   | 300   | 400 | /    | 59 | 168 | 200   | 368  |
| MO1AA5      | 550  | 43 | 112,5 | 225   | 337,5 | 450 | /    | 59 | 193 | 225   | 418  |
| MO1AA6      | 600  | 43 | 125   | 250   | 375   | 500 | /    | 59 | 218 | 250   | 468  |
| MO1AB2      | 650  | 43 | 125   | 250   | 400   | 525 | /    | 59 | 218 | 250   | 525  |
| MO1AA7      | 700  | 43 | 150   | 300   | 450   | 600 | /    | 59 | 268 | 300   | 600  |
| MO1AB3      | 750  | 43 | 150   | 300   | 450   | 600 | /    | 59 | 268 | 300   | 600  |
| MO1AA8      | 800  | 20 | 251   | 502,5 | 754   | /   | /    | 59 | 225 | 447,5 | 668  |
| MO1AB4      | 850  | 15 | 150   | 300   | 475   | 625 | 775  | 59 | 282 | 447   | 715  |
| MO1AA9      | 900  | 20 | 285   | 569   | 854   | /   | /    | 59 | 262 | 514   | 768  |
| MO1AB0      | 1000 | 20 | 238,5 | 447   | 715   | 954 | /    | 59 | 422 | 454   | 868  |
| MO1AB5      | 1100 | 50 | 150   | 375   | 625   | 850 | 1025 | 66 | 343 | 625   | 961  |
| MO1AB1      | 1200 | 20 | 231   | 462   | 692   | 923 | 1154 | 59 | 407 | 669   | 1068 |