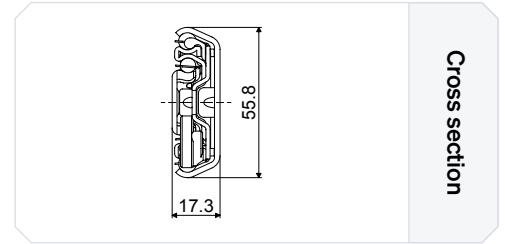
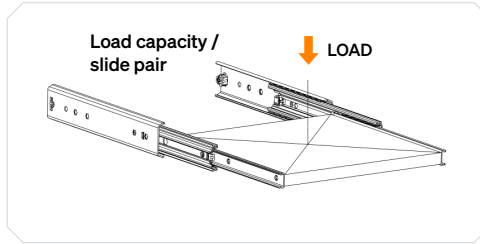
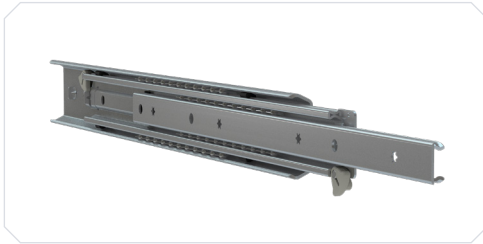


Telescopic slides
for a world in motion.

TR-5618 ULF HD BILEX

- Two way full extension slide - Loads up to 138 kg
- Slide profiles: Steel, galvanized
- Ball cage: Steel, galvanized
- Sequence device: Plastic / Elastomer
- Bearings: Hardened carbon steel
- Operating temperature: -20 to 80 degrees Celsius



Specifications

Fixation [Cabinet side]	Fixation [Drawer side]	Load capacity [kg]	Height [mm]	Width [mm]
Metal M5 / DIN 965 / ISO 7046 M5 / DIN 7500	Metal M4 / DIN 965 / ISO 7046 M4 / DIN 7500	114-138	55.8	17.3
Wood 5.0 / DIN 7997	Wood 4.5 / DIN 7997			

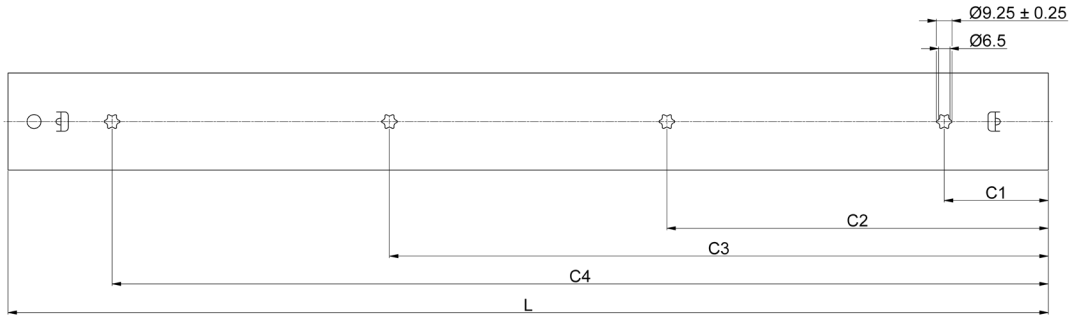
Technical information

Article no.	Length [mm]	Travel [mm] both ways	Load capacity [kg]
112511F	500	503	114
112510F	600	607	119
112509F	700	711	131
112512F	800	815	138

Features & Fixations

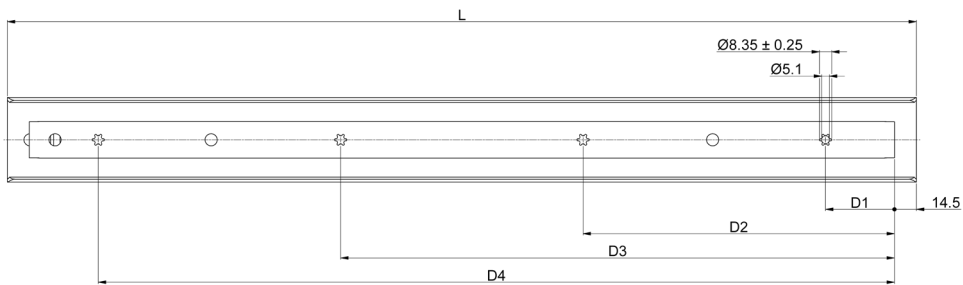
	Feature Two way extension	Allows movement in both directions, enabling access from either side of the application
	Fixation Countersunk holes	Specialized holes that allow fasteners, to remain flat with or below the surface of the base material of the slide

Hole pattern [mm] [Cabinet Side]



Article no.	L	C1	C2	C3	C4
112511F	500	58	186	314	442
112510F	600	60	220	380	540
112509F	700	62	254	446	638
112512F	800	64	288	512	736

Hole pattern [mm] [Drawer Side]



Article no.	L	D1	D2	D3	D4
112511F	500	43.5	171.5	299.5	427.5
112510F	600	45.5	205.5	365.5	525.5
112509F	700	47.5	239.5	431.5	623.5
112512F	800	49.5	273.5	497.5	721.5