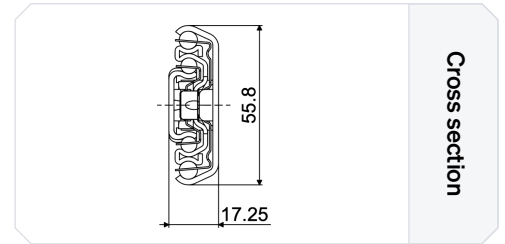
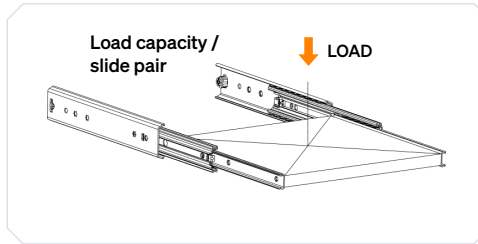
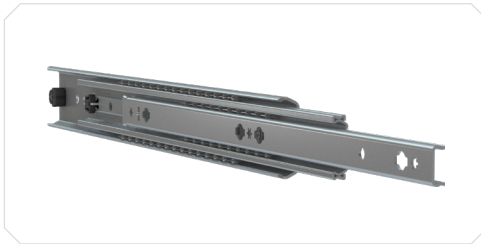


## TR-5617 ULF HD D

- Over-extension slide - Loads up to 129 kg
- Slide profiles: Steel, zinQroteQ
- Ball cage: Steel, galvanized
- Sequence device: Plastic / Elastomer
- Bearings: Hardened carbon steel
- Rubber stop: Plastic / Elastomer
- Operating temperature: -20 to 80 degrees Celsius

Telescopic slides  
for a world in motion.



### Specifications

Fixation [Cabinet side]	Fixation [Drawer side]	Load capacity [kg]	Height [mm]	Width [mm]
<b>Metal</b> M5 / DIN 965 / ISO 7046 M5 / DIN 7500	<b>Metal</b> M4 / DIN 965 / ISO 7046 M4 / DIN 7500 M4 / DIN 7991 / ISO 10462	81 - 129	55.8	17.25
<b>Wood</b> 5.0 / DIN 7997	<b>Wood</b> 4.0 / 4.5 / DIN 7997			

### Technical information

Article no.	Length [mm]	Travel [mm]	Load capacity [kg]
M12AA0	300	320	94
M12AA1	350	375	96
M12AA2	400	440	97
M12AA3	450	495	110
M12AA4	500	550	119
M12AA5	550	600	118
M12AA6	600	650	123
M12AA7	700	750	129
M12AA8	800	848	121
M12AA9	900	950	105
M12AB0	1000	1050	81
M12AB2	1100	1150	on request
M12AB1	1200	1250	on request

### Features & Fixations

**Feature**  
**Bumper with hold closed**

A hold-closed bumper absorbs impact and secures the drawer

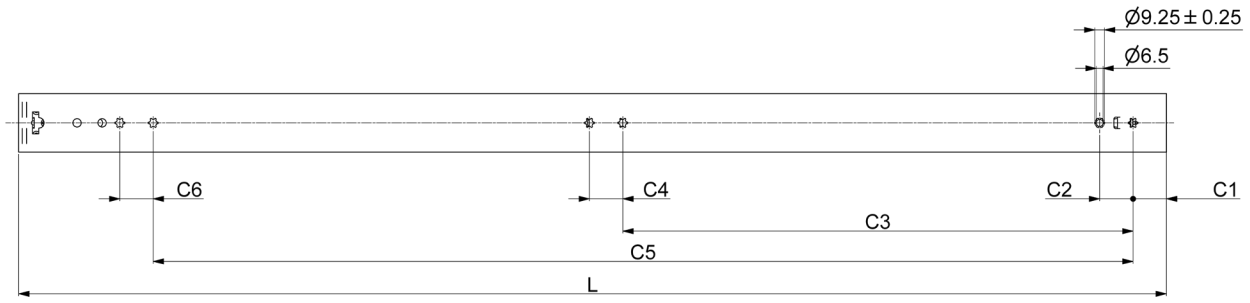
**Fixation**  
**Click bracket**

The click bracket enables quick, tool-free, secure mounting

**Fixation**  
**Countersunk holes**

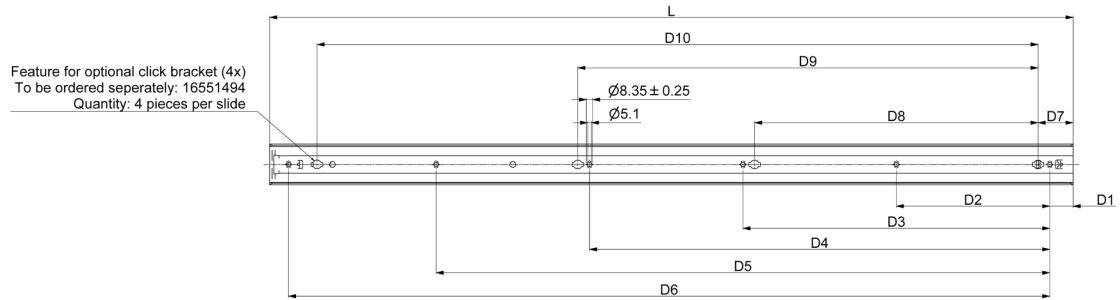
Countersunk holes ensure screws sit flush and avoid surface contact

Hole pattern [mm] [Cabinet Side]



Article no.	L	C1	C2	C3	C4	C5	C6
M12AA0	300	32	32	160	32	/	/
M12AA1	350	32	32	160	32	/	/
M12AA2	400	32	32	192	32	/	/
M12AA3	450	32	32	256	32	/	/
M12AA4	500	32	32	288	32	/	/
M12AA5	550	32	32	320	32	/	/
M12AA6	600	32	32	384	32	/	/
M12AA7	700	32	32	416	32	/	/
M12AA8	800	32	32	352	32	640	32
M12AA9	900	32	32	384	32	736	32
M12AB0	1000	32	32	448	32	832	32
M12AB2	1100	32	32	489	32	939	32
M12AB1	1200	32	32	544	32	1024	32

Hole pattern [mm] [Drawer Side]



Article no.	L	D1	D2	D3	D4	D5	D6	D7	D8	D9	D10
M12AA0	300	20	130	260	/	/	/	36	98	130	211
M12AA1	350	20	155	310	/	/	/	36	123	155	261
M12AA2	400	20	180	360	/	/	/	36	148	180	311
M12AA3	450	20	205	410	/	/	/	36	173	205	361
M12AA4	500	20	230	460	/	/	/	36	198	230	411
M12AA5	550	20	255	510	/	/	/	36	223	255	461
M12AA6	600	20	280	560	/	/	/	36	248	280	511
M12AA7	700	20	330	660	/	/	/	36	298	330	611
M12AA8	800	20	251	376.5	502.5	754	/	36	344.5	376.5	705
M12AA9	900	20	285	427	569	854	/	36	395	427	805
M12AB0	1000	20	238.5	477	715.5	954	/	36	445	477	899
M12AB2	1100	32	210	420	630	840	1042	48	388	630	987
M12AB1	1200	20	231	462	692	923	1154	36	430	692	1099