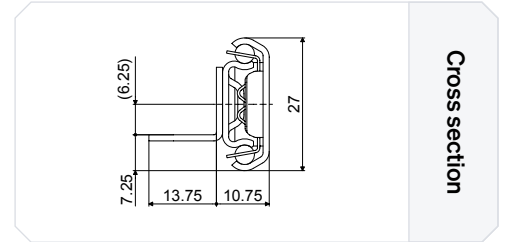
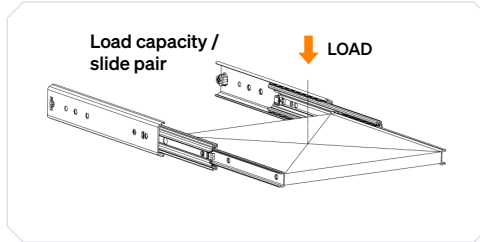
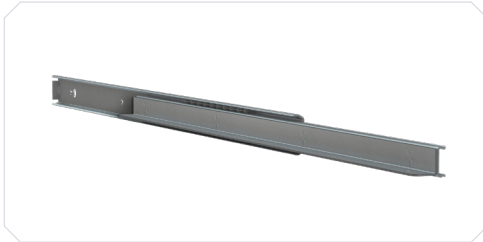


Telescopic slides
for a world in motion.

TR-2711 EMS 2

- Single extension slide - Loads up to 28 kg
- Slide profiles: Steel, galvanized
- Ball cage: Steel, galvanized
- Bearings: Hardened carbon steel
- Operating temperature: -20 to 80 degrees Celsius



Specifications

Fixation [Cabinet side]	Fixation [Drawer side]	Load capacity [kg]	Height [mm]	Width [mm]
Metal M4 / ISO 7380	Metal M3 / DIN 7985 / ISO 7045	22 - 28	27	10.75
Wood 4.0 / DIN 7997	Wood 3.5 / DIN 7997			

Technical information

Article no.	Length [mm]	Travel [mm]	Load capacity [kg]
109049F	300	210	22
109050F	350	240	26
109051F	400	290	26
109052F	450	340	26
109053F	500	370	28
109054F	550	420	23
109055F	600	460	23

Features & Fixations



Fixation
Hole

To secure the slide to both the mounting surface or the cabinet and the drawer



Fixation
Drawer carrier

Angle bar, mounted on a slide, to mount and support a drawer

