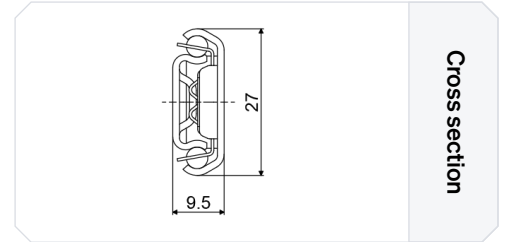
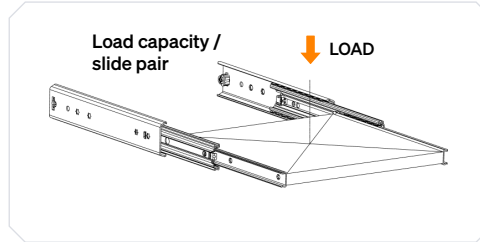
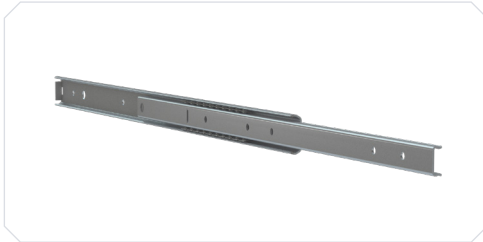


## TR-2710 EMS 1

- Single extension slide - Loads up to 28 kg
- Slide profiles: Steel, galvanized
- Ball cage: Steel, galvanized
- Bearings: Hardened carbon steel
- Operating temperature: -20 to 80 degrees Celsius

Telescopic slides  
for a world in motion.



### Specifications

Fixation [Cabinet side]	Fixation [Drawer side]	Load capacity [kg]	Height [mm]	Width [mm]
<b>Metal</b> M4 / ISO 7380	<b>Metal</b> M4 / DIN 965	22 - 28	27	9.5
<b>Wood</b> 4.0 / DIN 7997	<b>Wood</b> 3.5 / DIN 7997			

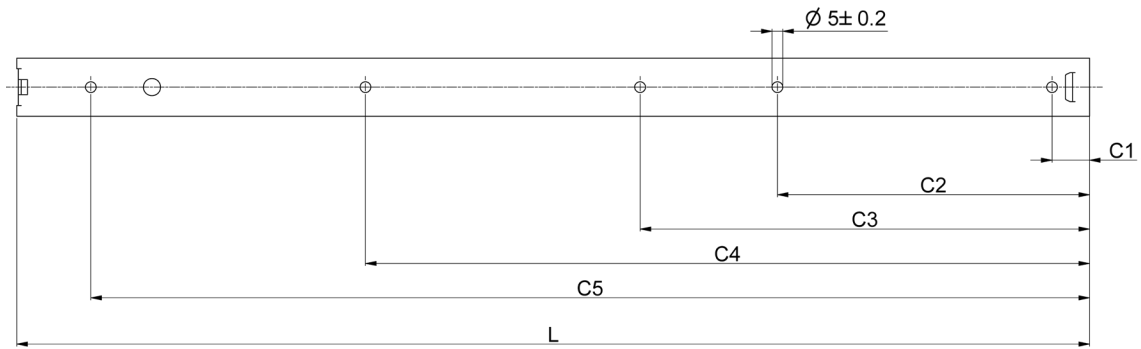
### Technical information

Article no.	Length [mm]	Travel [mm]	Load capacity [kg]
109042F	300	210	22
109043F	350	240	26
109044F	400	290	26
109046F	500	370	28

### Features & Fixations

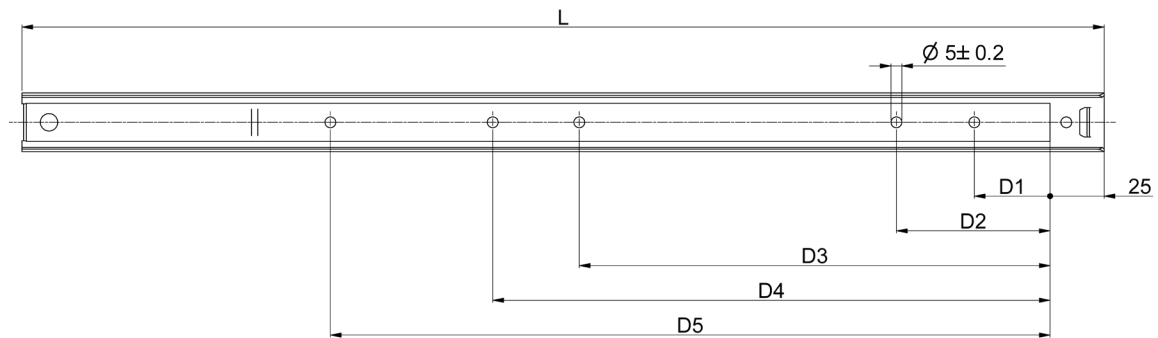
	<b>Fixation Hole</b>	To secure the slide to both the mounting surface or the cabinet and the drawer
--	----------------------	--

Hole pattern [mm] [Cabinet Side]



Article no.	L	C1	C2	C3	C4	C5
109042F	300	17.5	113.5	209.5	273.5	/
109043F	350	17.5	113.5	209.5	337.5	/
109044F	400	17.5	113.5	209.5	369.5	/
109046F	500	17.5	145.5	209.5	337.5	465.5

Hole pattern [mm] [Drawer Side]



Article no.	L	D1	D2	D3	D4	D5
109042F	300	35	71	117.5	157.5	/
109043F	350	35	71	142.5	182.5	/
109044F	400	35	71	167.5	207.5	257.5
109046F	500	35	71	217.5	257.5	332.5