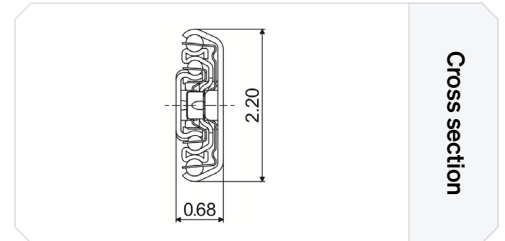
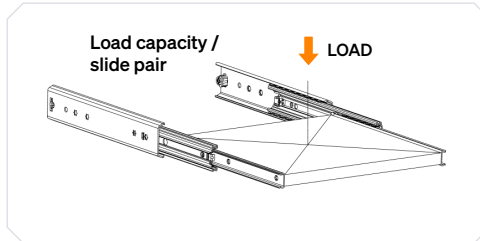


TR-5617 ULF HD D

- Full extension slide - Loads up to 284 lbs
- Slide profiles: Steel, zinQproteQ
- Ball cage: Steel, galvanized
- Sequence device: Plastic / Elastomer
- Bearings: Hardened carbon steel
- Rubber stop: Plastic / Elastomer
- Operating temperature: -20 to 80 degrees Celsius

Telescopic slides
for a world in motion.





Specifications

Fixation [Cabinet side]	Fixation [Drawer side]	Screw Head	Load capacity [lbs]	Height [in]	Width [in]
Metal ASME B18.3 No. 8 DIN 7500-M - DIN 965 / ISO 7046 - M5	Metal ASME B18.3 No. 6 DIN 7500-M - DIN 965 / ISO 7046 - M5	Metal Countersunk 0.13"	179 - 284	2.20	0.68
Wood Imperial 8g DIN 7977 5.0 mm	Wood Imperial 6 g DIN 7977 4.0/4.5 mm	Wood Countersunk 0.10"			

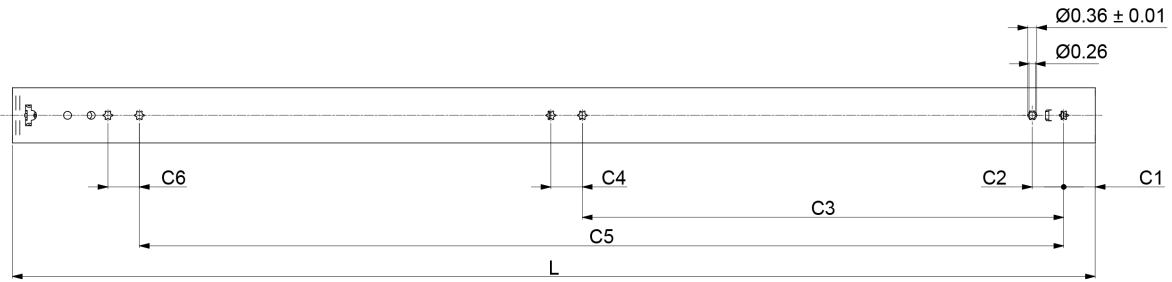
Technical information

Article no.	Length [in]	Travel [in]	Load capacity [lbs]
M12AA0	11.81	12.6	207
M12AA1	13.78	14.76	212
M12AA2	15.75	17.32	214
M12AA3	17.72	19.49	243
M12AA4	19.68	21.65	262
M12AA5	21.65	23.62	260
M12AA6	23.62	25.59	271
M12AA7	27.56	29.53	284
M12AA8	31.5	33.39	267
M12AA9	35.43	37.4	231
M12AB0	39.37	41.34	179
M12AB2	43.31	45.28	on request
M12AB1	47.24	49.21	on request

Features & Fixations

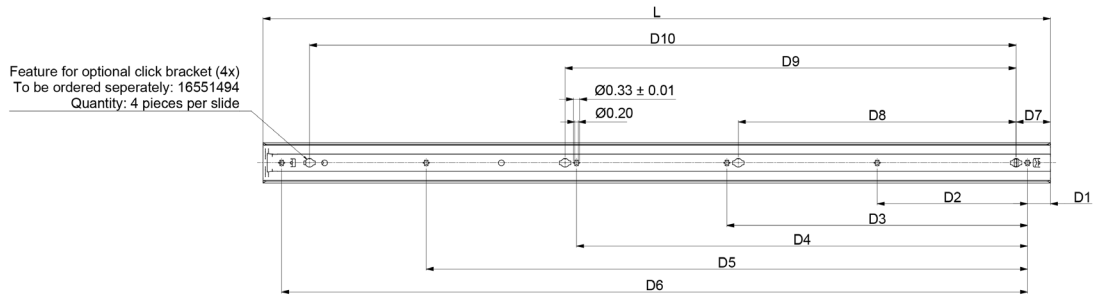
	Feature Bumper with hold closed	A hold-closed bumper absorbs impact and secures the drawer
	Fixation Click bracket	The click bracket enables quick, tool-free, secure mounting
	Fixation Countersunk holes	Countersunk holes ensure screws sit flush and avoid surface contact

Hole pattern [in] [Cabinet Side]



Article no.	L	C1	C2	C3	C4	C5	C6
M12AA0	11.81	1.26	1.26	6.30	1.26	/	/
M12AA1	13.78	1.26	1.26	6.30	1.26	/	/
M12AA2	15.75	1.26	1.26	7.56	1.26	/	/
M12AA3	17.72	1.26	1.26	10.08	1.26	/	/
M12AA4	19.69	1.26	1.26	11.34	1.26	/	/
M12AA5	21.65	1.26	1.26	12.60	1.26	/	/
M12AA6	23.62	1.26	1.26	15.12	1.26	/	/
M12AA7	27.56	1.26	1.26	16.38	1.26	/	/
M12AA8	31.50	1.26	1.26	13.86	1.26	25.20	1.26
M12AA9	35.43	1.26	1.26	15.12	1.26	28.98	1.26
M12AB0	39.37	1.26	1.26	17.64	1.26	32.76	1.26
M12AB2	43.31	1.26	1.26	19.25	1.26	36.97	1.26
M12AB1	47.24	1.26	1.26	21.42	1.26	40.31	1.26

Hole pattern [in] [Drawer Side]



Article no.	L	D1	D2	D3	D4	D5	D6	D7	D8	D9	D10
M12AA0	11.81	0.79	5.12	10.24	/	/	/	1.42	3.86	5.12	8.31
M12AA1	13.78	0.79	6.10	12.20	/	/	/	1.42	4.84	6.10	10.28
M12AA2	15.75	0.79	7.09	14.17	/	/	/	1.42	5.83	7.09	12.24
M12AA3	17.72	0.79	8.07	16.14	/	/	/	1.42	6.81	8.07	14.21
M12AA4	19.69	0.79	9.06	18.11	/	/	/	1.42	7.80	9.06	16.18
M12AA5	21.65	0.79	10.04	20.08	/	/	/	1.42	8.78	10.04	18.15
M12AA6	23.62	0.79	11.02	22.05	/	/	/	1.42	9.76	11.02	20.12
M12AA7	27.56	0.79	12.99	25.98	/	/	/	1.42	11.73	12.99	24.06
M12AA8	31.50	0.79	9.88	14.82	19.78	29.69	/	1.42	13.56	14.82	27.76
M12AA9	35.43	0.79	11.22	16.81	22.40	33.62	/	1.42	15.55	16.81	31.69
M12AB0	39.37	0.79	9.39	18.78	28.17	37.56	/	1.42	17.52	18.78	35.39
M12AB2	43.31	1.26	8.27	16.54	24.80	33.07	41.02	1.89	15.28	24.80	38.86
M12AB1	47.24	0.79	9.09	18.19	27.24	36.34	45.43	1.42	16.93	27.24	43.27